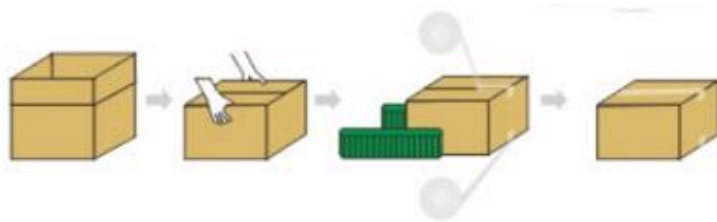
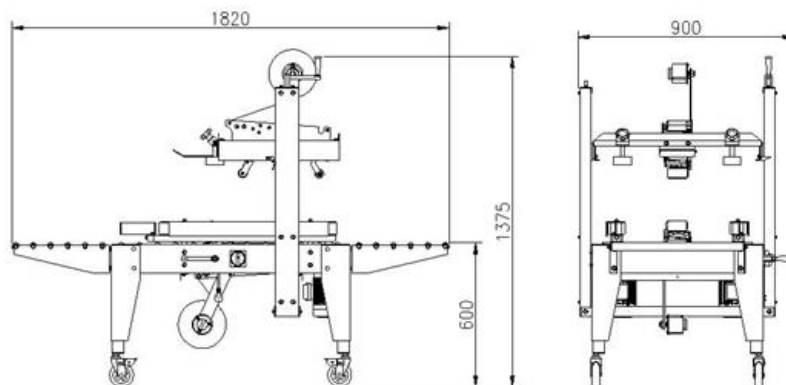


EXPRESS SEMI-AUTOMATIC CARTON SEALER



Express semi-automatic carton sealer mainly used for small, narrow or short small express boxes, and the appearance and size of the equipment can be customized production

Technical materials



Machine weight: ≈120KG

Sealing speed: 1000 ~ 1200 cases/hour

Noise level: Maximum 70dBA

Sealing size:

Length (L) : L150 ~ ∞

Width (W) : W110 ~ 500mm

Height (H) : H110 ~ 500mm

Power consumption: Maximum 0.2KW

Applicable tape: 48 ~ 60 ~ 75Wmm×1000ML

Table height: 570 ~ 770mm

Mechanical size: L1820*W900*H1375mm

Power supply (Optional) : 110V/50Hz/60Hz/1Ph

220V/50Hz/60Hz/1Ph

380V/50Hz/60Hz/3Ph

Installation Instructions

Power supply system, voltage, frequency, etc... Must comply with the requirements of registration on the machine name plate

Note: Install the machine where the power supply is easily connected.

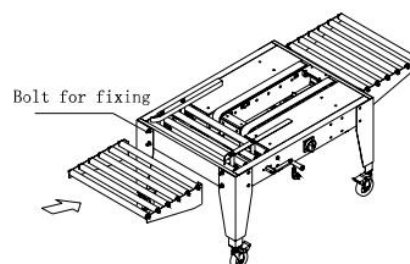
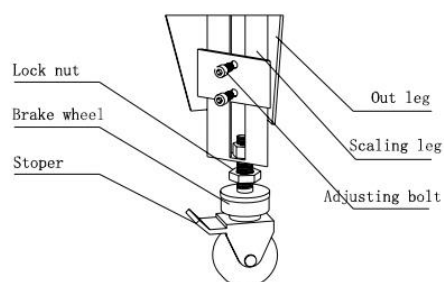
Plug it in.

A switch on the side of the machine controls the operation of the machine.

Note:

Be sure to unplug the power cord before opening the cabinet or cover.

Adjustment



Step 1 (Adjust the height of the workbench)

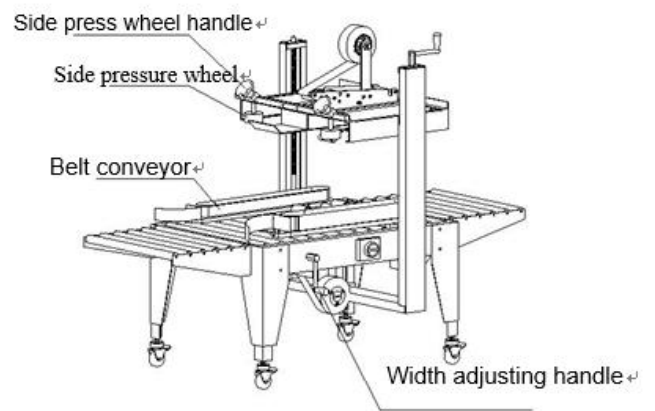
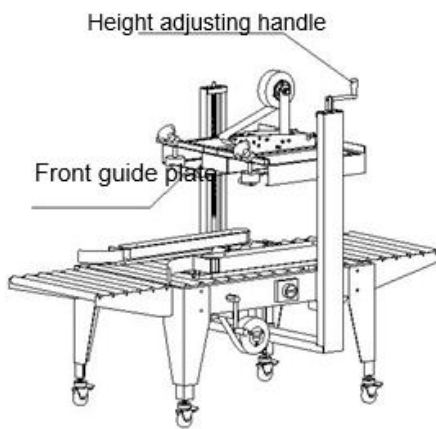
Place the equipment on the corresponding work site, and adjust the height of the working table as required.

Specific operation: loosen the "adjusting bolt" and adjust the "extension"

Redraw the feet ", after reaching the required operating height, lock the "adjusting bolt" and press down the "stop", so that the machine is fixed.

Step 2 (Install the drum frame)

Put the roller frame close to the machine frame, fix it on the corresponding fixing bolt, and lock.



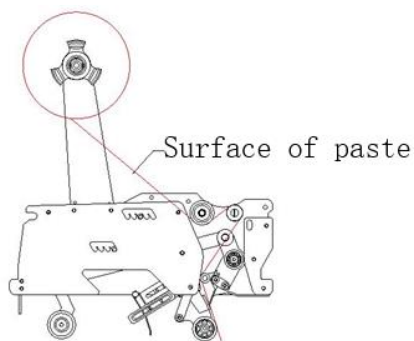
Step 3 (Height Adjustment)

Place the carton on the working surface and shake the height adjustment handle until the front guide plate just touches the top of the carton.

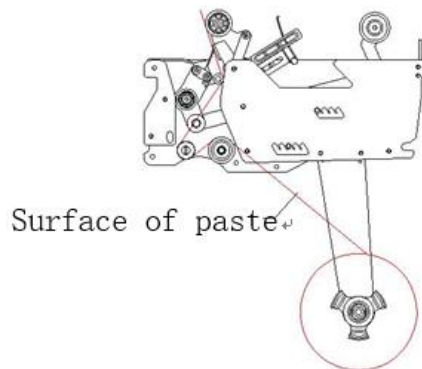
Step 4 (Width adjustment)

A. After the height is adjusted well, shake the width adjusting handle so that the transmission belt can grip the carton and transfer the carton.

B. Loosen the handle of the side press wheel, press the side press wheel against the carton, and tighten the handle of the side press wheel.



Drawing of tape strap strap



Drawing of lower tape belt

Cleaning and lubrication

01 Maintenance personnel should read this manual before carrying out repair and maintenance work.

02 To maintain the service life of the blade, it is recommended to check whether the blade is too much adhesive before work, clean it, and wipe the 30# oil

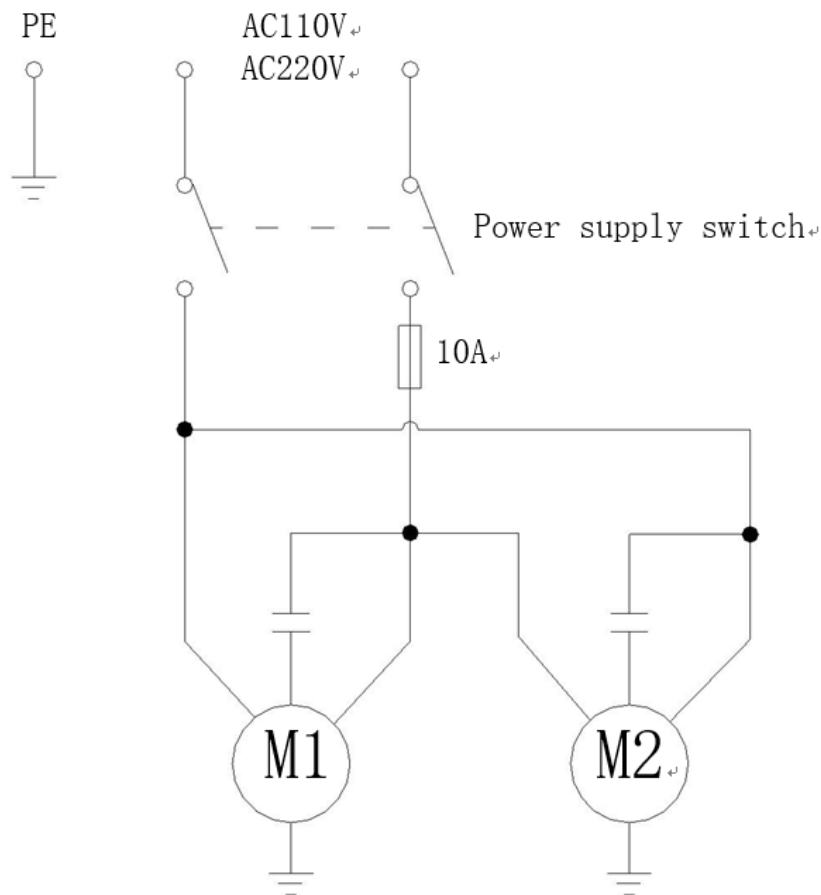
03 Be sure to turn off and cut off the power supply before repair and maintenance, so as to prevent inadvertence and dangerous power supply

04 If tapes of different sizes must be used, purchase the corresponding parts of different tapes according to the parts list in the instruction manual

05 Keep the machine clean as far as possible, remove the dirt, waste and tape attached to the movement and belt rotating part

06 In order to ensure the normal operation of the machine, please make sure to use lubricating oil once a week for the transmission and key action parts of the equipment

Electric control schematic



Troubleshooting manual

Fault	Reason	Solution
	Carton is too narrow for size	Narrow cartons will cause slippage and conveyor belt wear

Conveyor belt cannot drive the carton	Conveyor belt wear	Replace belt
	Adhesive pressure is insufficient	Please adjust the height of the tape holder
	Rubber wheel of the tape is too low	Adjust the position of the pressure belt CAM
	Spring of the adhesive is too tight	Tighten the spring to reduce its tension
Conveyor belt did not move	Conveyor belt tension is insufficient	Adjust conveyor belt tension
	Power supply not connected	Please check whether the power supply is connected
	Motor does not turn	Check the reduction motor for damage
Carton is clamped at the outlet	Position of the tape holder is too low	Please adjust the height of the tape holder
Machine produces noise	Wear of bearing in belt bearing seat	Replace the 6202 bearing
Tape is not glued to the center of the carton	The carton is not centered	Adjusting the position of the carton
Folding tape on the carton is too long	Wrong way to wear the tape	Re-strap
Tape cannot be cut off or the tooth shape of the tape cut is abnormal, with tearing	Blade passivation or fracture	Replacing a blade
	Insufficient strength of tape	Turn the elastic nut of the rubber paper base clockwise to tighten it
	The blade is taped	Clean the blade
	Blade fixing screw is damaged or loose	Replace or lock the screws
The folding tape on the carton is too short	The upper and lower guide pulley is not flexible	Remove and lubricate the two sides
	The blade is out of position	Adjusting the blade position
	Wrong way to wear the tape	Re-strap
The tape creases rather than sticks	Rubber wheel of the taping device does not rotate flexibly	Remove and lubricate the foreign matter on the edge of the rubber wheel
	Adhesive paper seat is too tight	Loosen the elastic nut of the paper holder by turning it counterclockwise
	The position of the tape holder is too high	Please adjust the upper knife height
Tape rewinding	Unidirectional roller is damaged	Replace the unidirectional roller
Head of the lower tape is sagging	Tape is too thin, stored too long and deformed	Replace with new tape
Carton is clamped in the tape holder	Position of the tape holder is too low	Please adjust the height of the tape holder