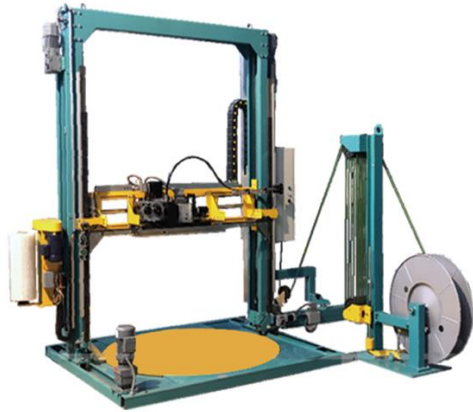
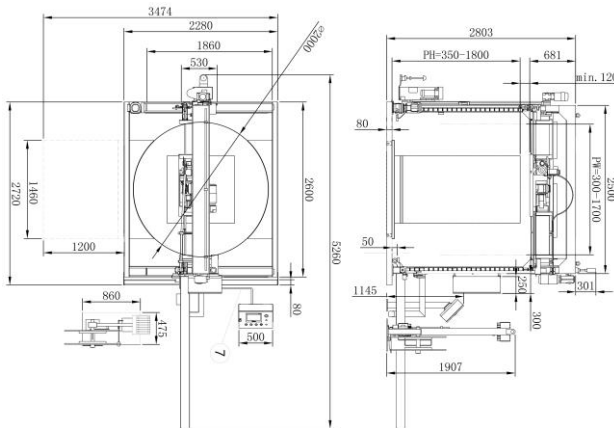


## WRAPPING AND STRAPPING MACHINE



STRAPPING AND WRAPPING INTEGRATED DESIGN  
DOUBLE MATERIAL PACKAGING



LAYOUT SIZE DRAWING (MM)

PLC AND TOUCH SCREEN CONTROL, STRAPPING AND WINDING PARAMETERS CAN BE SET  
PHOTOELECTRIC SWITCH, SELF-DYNAMIC MEASUREMENT OF CARGO INFORMATION  
WITH SWITCH PROTECTION DEVICE AND EMERGENCY STOP SWITCH DEVICE



BINDING AND WINDING INTEGRATED DESIGN, DOUBLE MATERIAL PACKAGING EFFECT IS BETTER

Item	Unit	Parameter
Pallet diameter	mm	2000/ Customizable
Max load weight	Kg	1500/2000
Plate rotation speed	Rpm	5~12
Carriage speed up-down	m/min	1.5~4.0
Carriage type		Mechanical/DC/AC
Film tensioning		Adjustable by touch screen
Film pre-stretch	%	125~400
Width of the strapping belt	mm	12~16
Maximum product height	mm	2400
Power supply	V	220V/1P±10%/50 or 60Hz
Installed power	Kw	5.0
Reel film size	mm	500*260
Weight of film reel	Kg	15/20/25
Film thickness	um	17~35
Movement of the nose frame	mm/s	160
Maximum distance of guide rail	mm	1500